

Half Moon Bay HS Facilities Assessment and Master Plan Updates

January 23, 2025

A photograph of a school building with a cougar logo and the text "HOME OF THE COUGARS". The building is light-colored with a blue roof and a concrete walkway leading to a set of stairs. There are green bushes in the foreground and a wooden bench. The sky is blue and there are trees in the background.

HOME OF THE
COUGARS

Participation. Enthusiasm. Success.



make a **DIFFERENCE**

About QKA

- 39-Year History
- More than 2,200 projects and \$2.5 billion in school facilities in Northern California
- 99% of our projects are K-12
- 72 employees in two office locations, including LEED AP and ALEP on staff
- Employee-Owned Firm



Agenda + Goals

- Introduction: Hello from our team
- Work to date completed and in Process
- Project Approach and Plan
 - Facilities Assessment
 - Facilities Master Plan
- Next Steps



Projects we have worked together on:



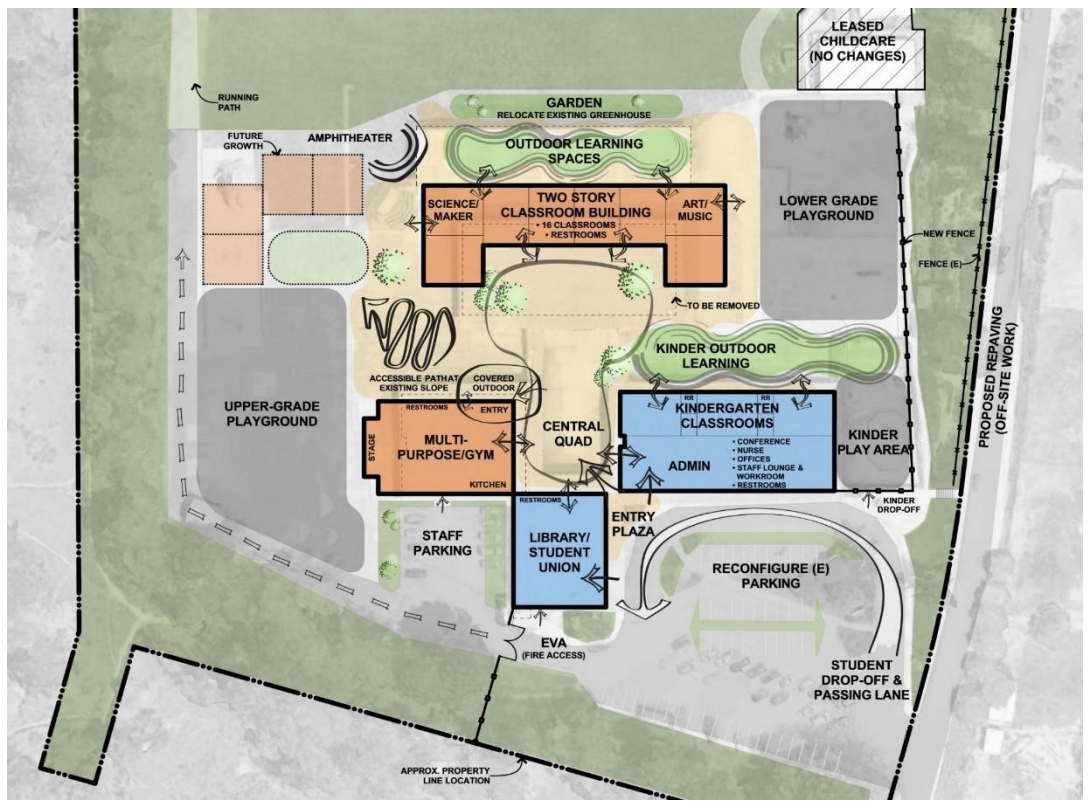
Hatch Elementary
School New
Kindergarten
Classrooms and
Outdoor Play



Hatch Elementary School
Preschool Play area and
Education Complex

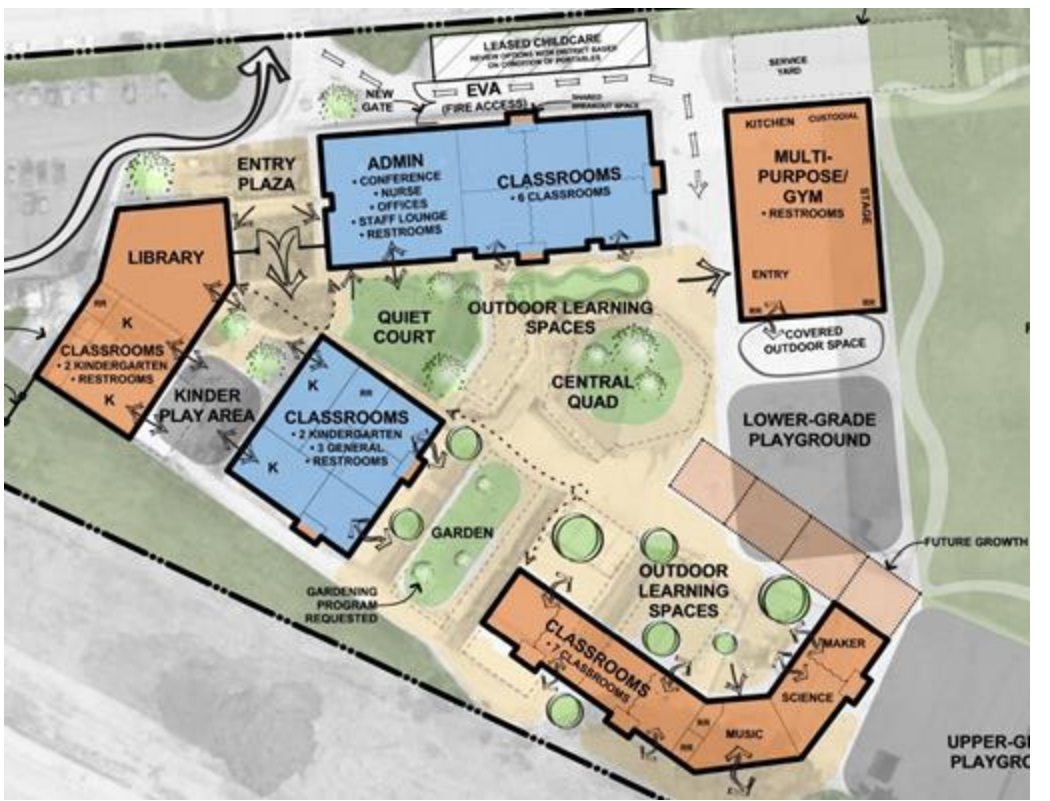


Projects we have worked together on:



LEGEND

- NEW BUILDING
- RECONFIGURATION/ MODERNIZED BUILDING
- NEW PLAYGROUND W/ EQUIPMENT
- FUTURE GROWTH
- NEW PAVED OUTDOOR
- DEMOLISHED
- LEASED AREA
- COVERED WALKWAY
- RR RESTROOM
- (E) EXISTING
- K KINDERGARTEN



Farallone View Master Plan

El Granada Master Plan

Assessment and Master Planning at Farallone View ES and El Granada View ES



Projects we have worked together on:

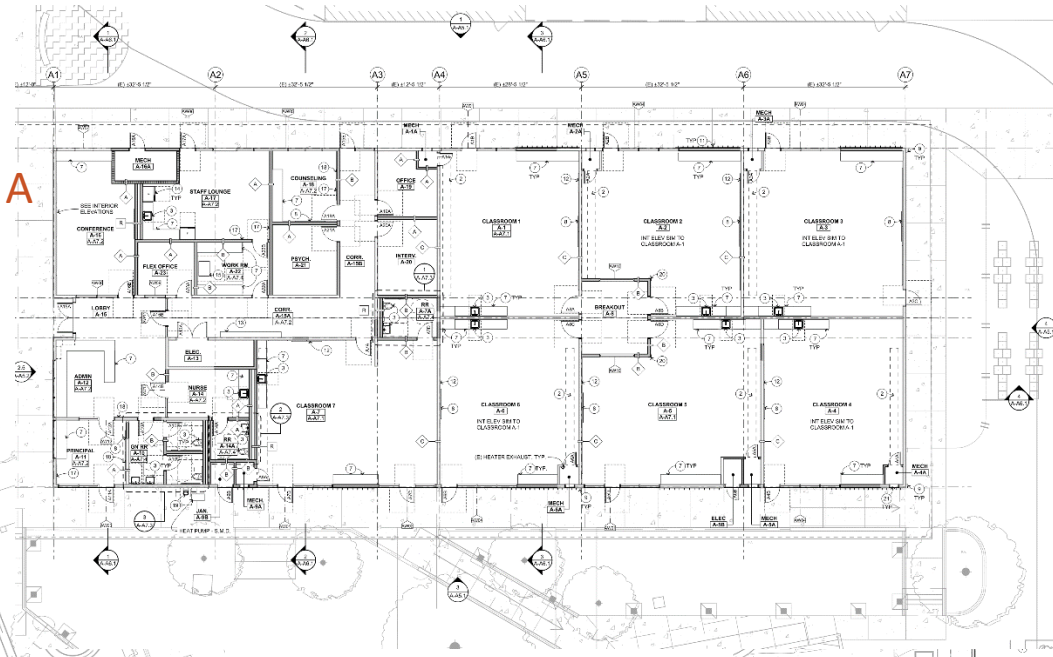


El Granada Elementary School
Phase 1

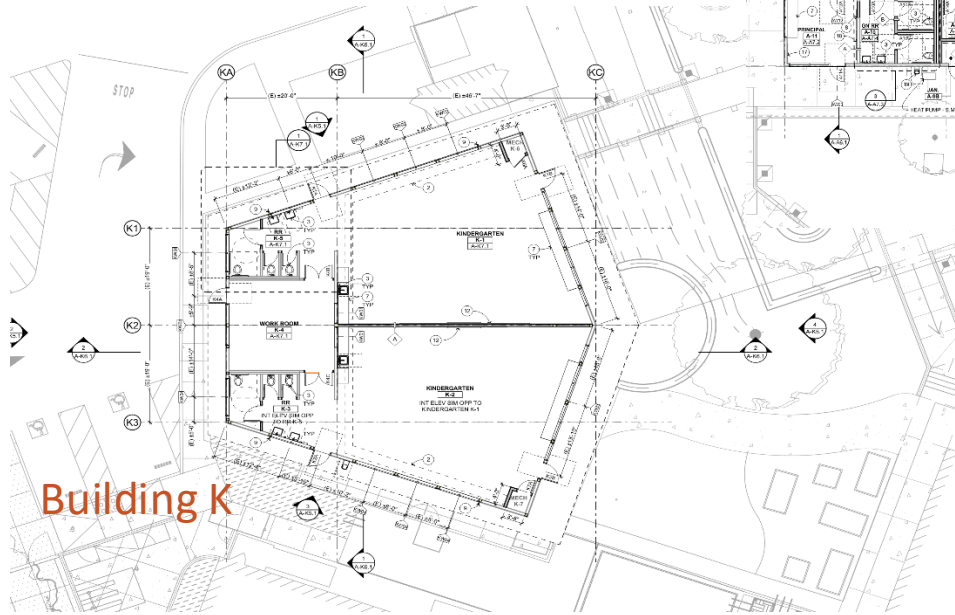


Projects we have worked together on:

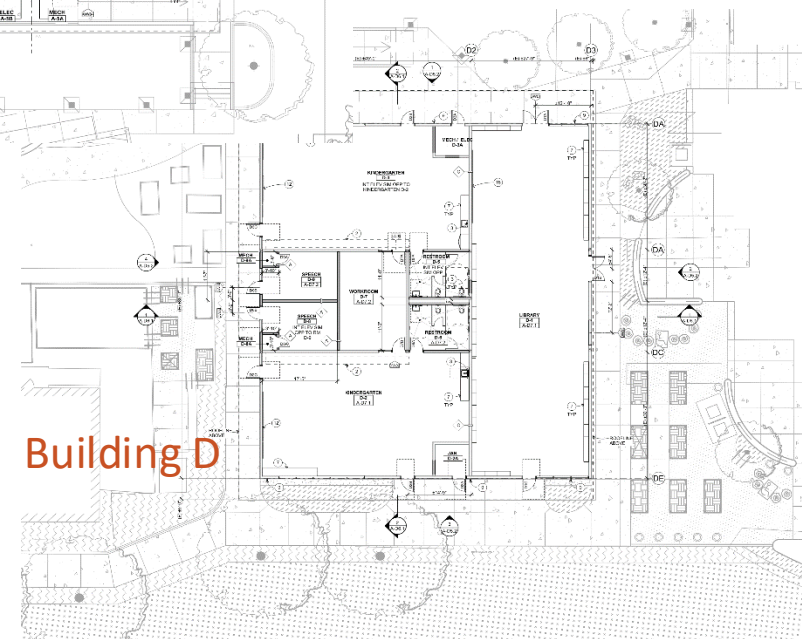
Building A



Building K



Building D



El Granada Elementary School
Phase 2

PROJECT DEVELOPMENT PROCESS



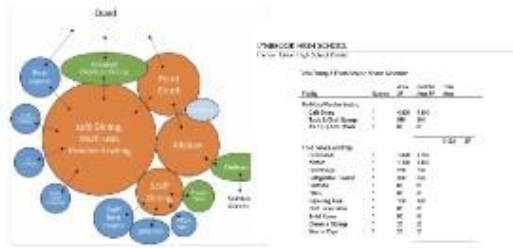
MASTER PLANNING



- General scope of projects
- Big picture budget
- Prioritization

CONTINUOUS
STAKEHOLDER
ENGAGEMENT

PROGRAMMING



- Specific needs for each program
- Relationships between spaces



DESIGN



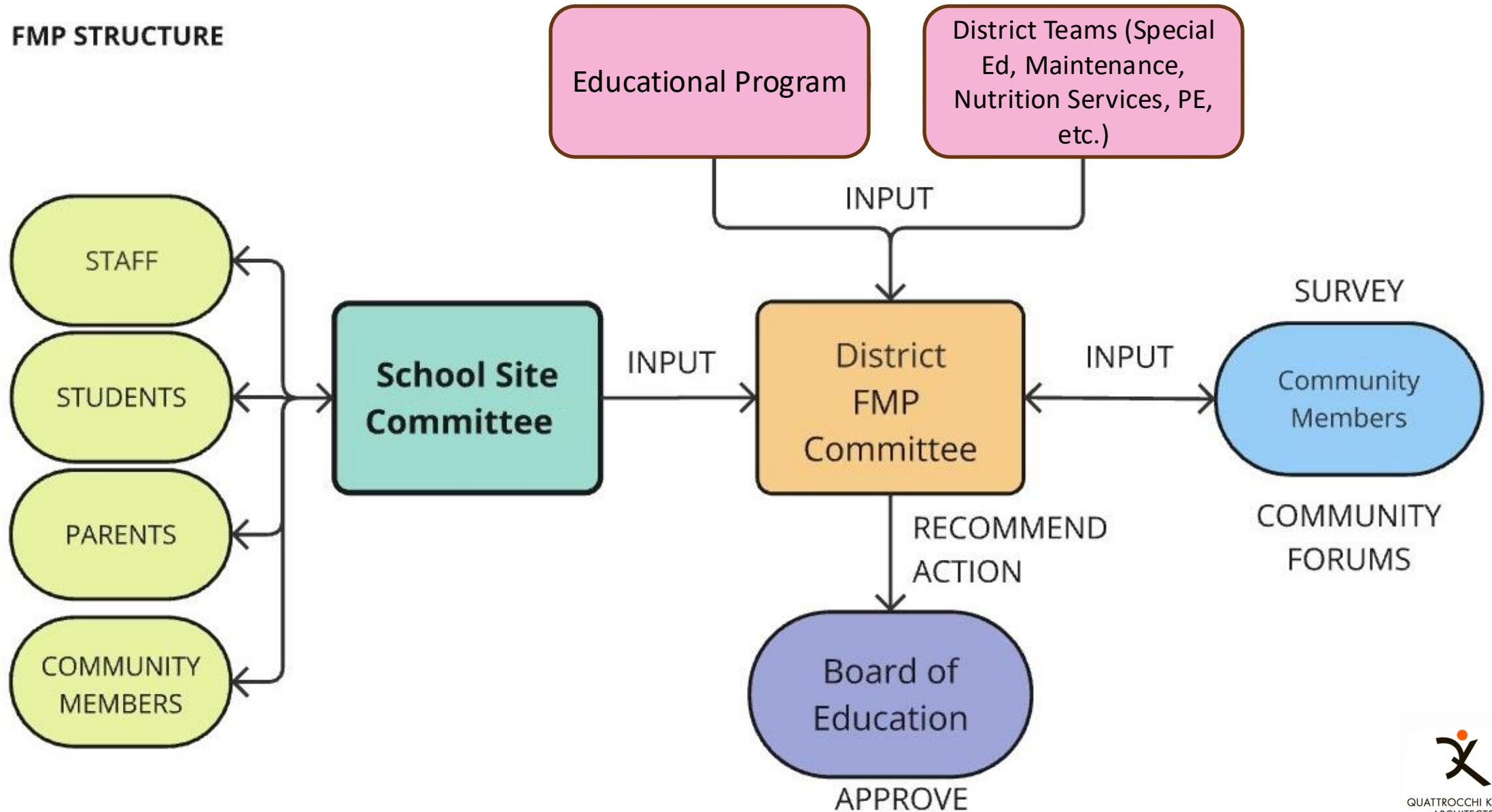
- Design and layout of buildings
- Landscape design
- Architecture and materials



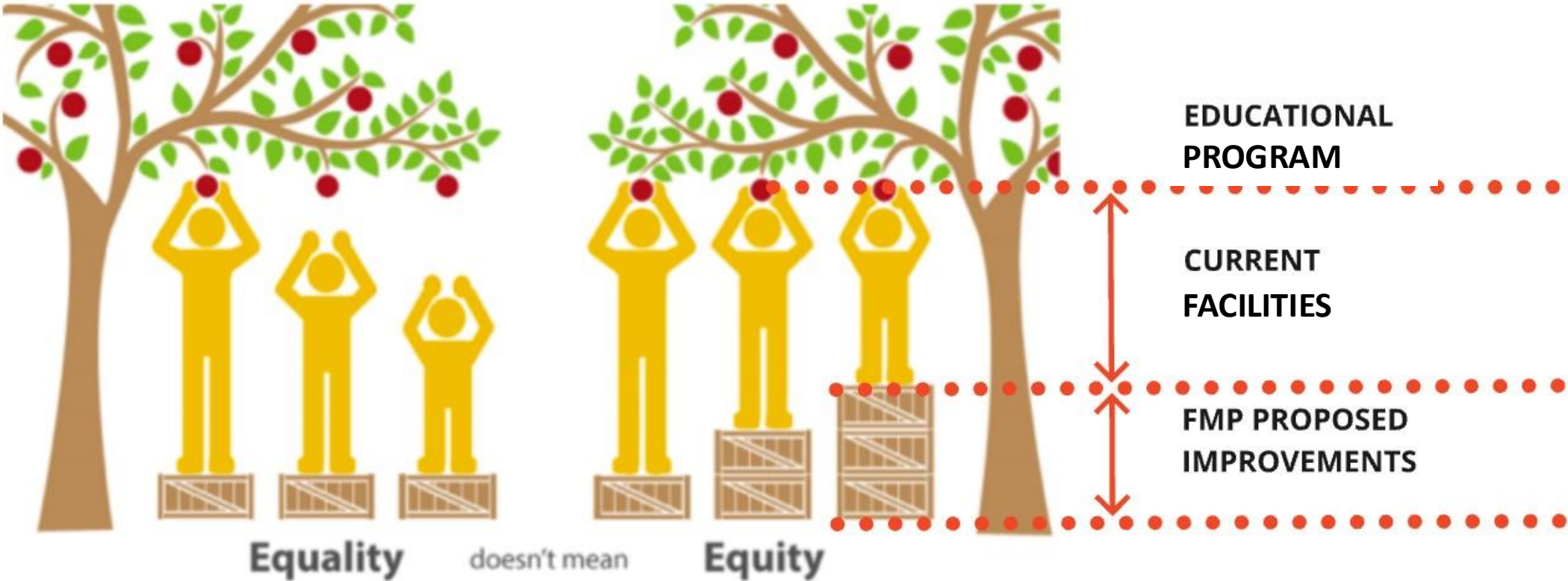
LEVEL OF
DETAIL

FACILITIES MASTER PLANNING PROCESS ORGANIZATION

FMP STRUCTURE

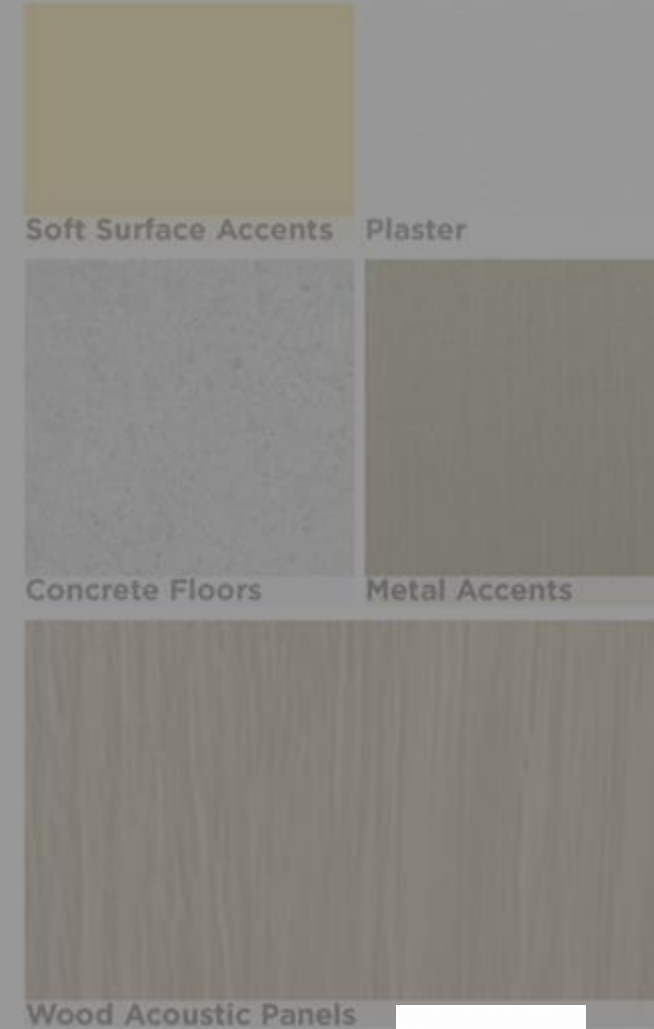


APPROACH TO EQUITY



Approach

- **Collaborative** project approach
- **Dedicated** proven team
- **Clear** communication
- **Honesty** and transparency



Community Engagement

- **Community Engagement Plan**
- Site Committee
- Individual Staff Meetings
- **Community Forums**
- Direct Communications
- Student Programs

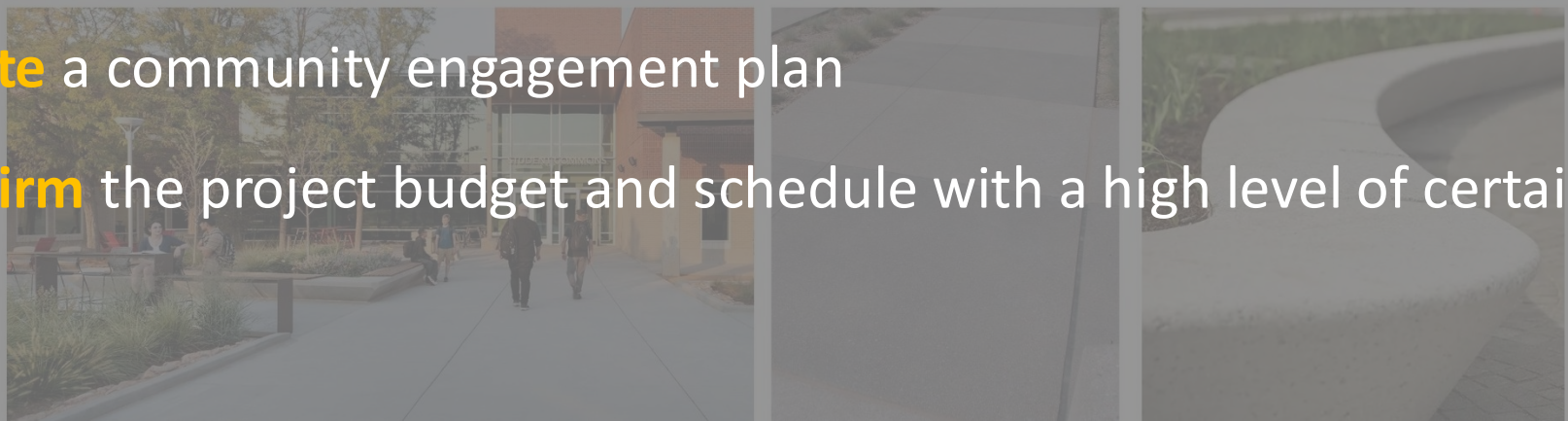


Planned Schedule

- **Complete** the investigations, reports, and **conduct** additional investigation where appropriate
- **Verify** the facilities needs
- **Develop** options
- **Validate** and **finalize** proposed update to the Half Moon Bay High School Master Plan
- **Create** a community engagement plan
- **Confirm** the project budget and schedule with a high level of certainty

- 1 PAC Entry Plaza
- 2 Accent Concrete Paving
- 3 Specimen Tree
- 4 Seat Wall
- 5 New Fence and Gate
- 6 Concrete Paving
- 7 Existing Drop-off

--- Base Scope



Questions/ Thoughts?

