



Southern San Mateo County Coastal Trail Study
coastaltrailstudy.org

San Mateo County BPAC
December 15, 2022

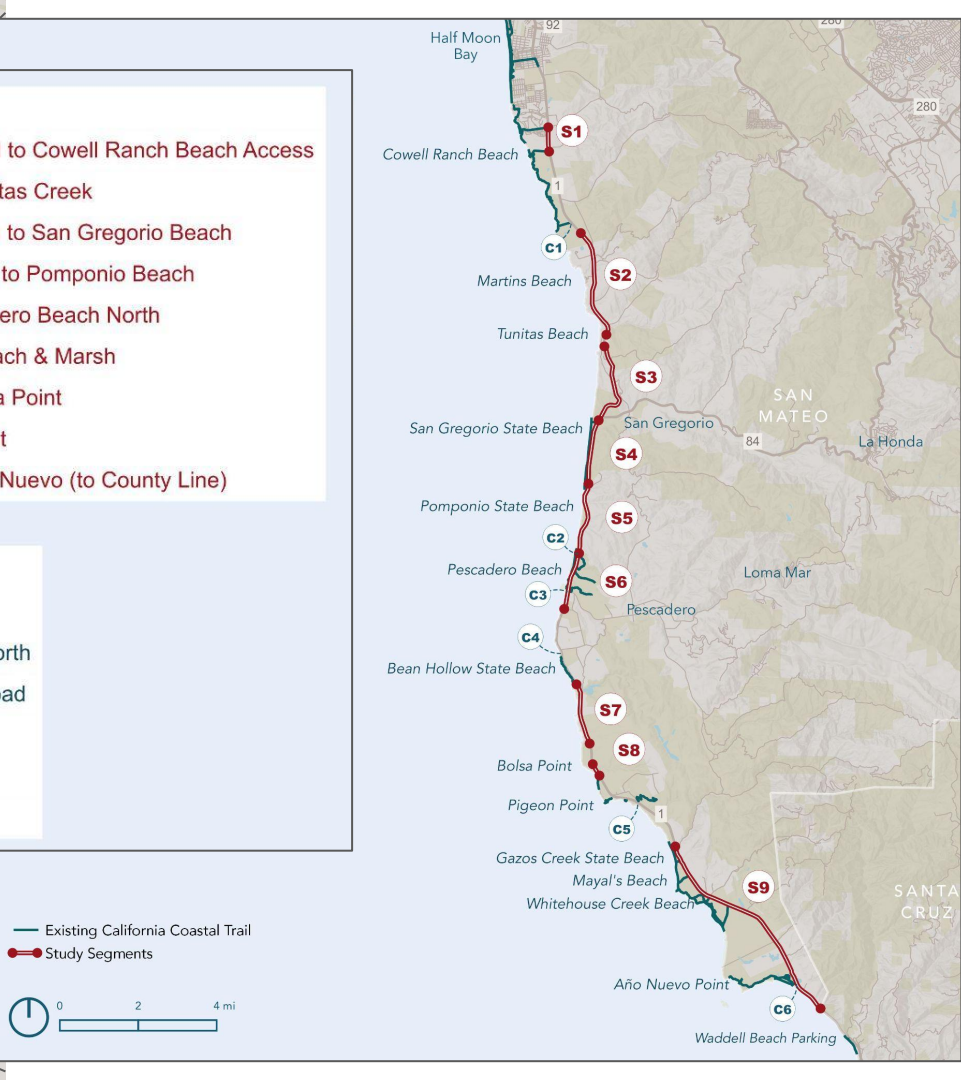


ID Segment Name

- (S1) Miramontes Point Rd to Cowell Ranch Beach Access
- (S2) South Cowell to Tunitas Creek
- (S3) Tunitas Creek Beach to San Gregorio Beach
- (S4) San Gregorio Beach to Pomponio Beach
- (S5) Pomponio to Pescadero Beach North
- (S6) Pescadero State Beach & Marsh
- (S7) Bean Hollow to Bolsa Point
- (S8) Bolsa to Pigeon Point
- (S9) Gazos Creek to Año Nuevo (to County Line)

ID Crossing Name

- (C1) Purisima-to-the-Sea
- (C2) Pescadero Beach North
- (C3) Pescadero Creek Road
- (C4) Bean Hollow North
- (C5) Pigeon Point Road
- (C6) Año Nuevo



Other Plans

- Unincorporated County Active Transportation Plan
- South Coast Sea Level Rise Study
- Caltrans Bike Plan, Ped Plan
- Ohlone Portolá Heritage Trail Feasibility Study



Coastal Trail Study Approach & Progress



1

Geologic
analysis

Transportation
analysis

Community
Outreach

2

Trail User
Experience

Prioritization

3

Recommended
Trail Alignments

Community
Outreach

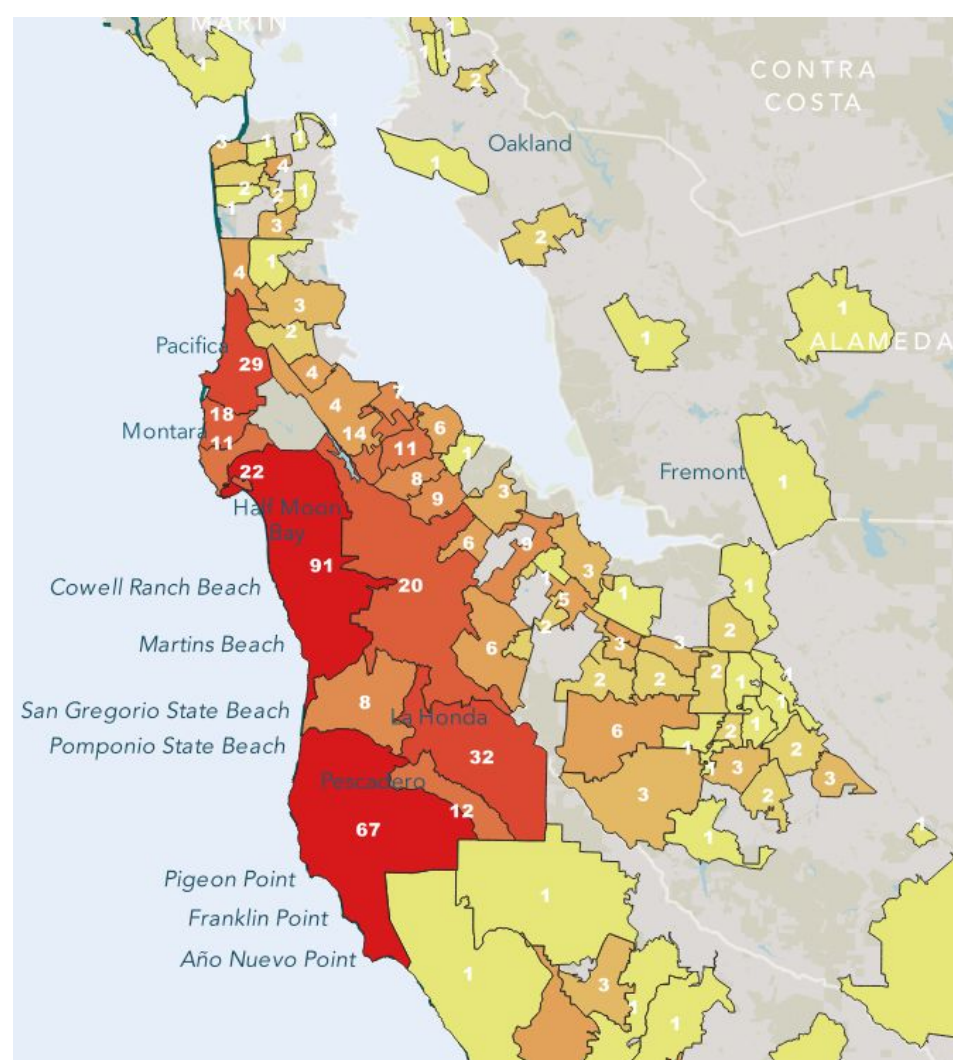
Community Outreach Summary

| | |
|-----------------------|-------------------|
| Online & Paper Survey | 557 responses |
| In-person Outreach | 140+ interactions |
| Virtual Presentations | 4 presentations |

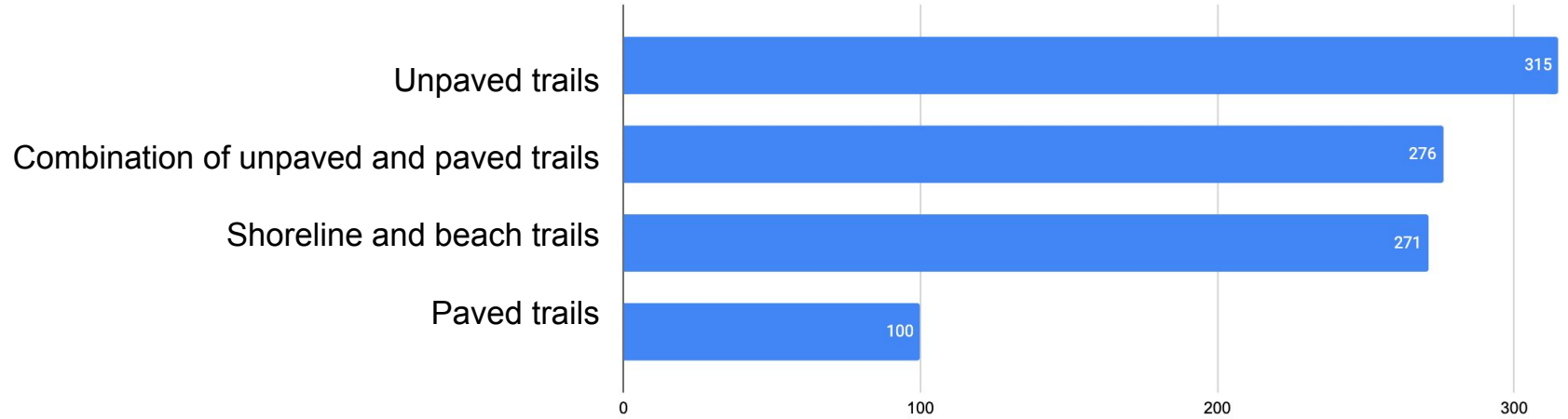


Response by Zip Code

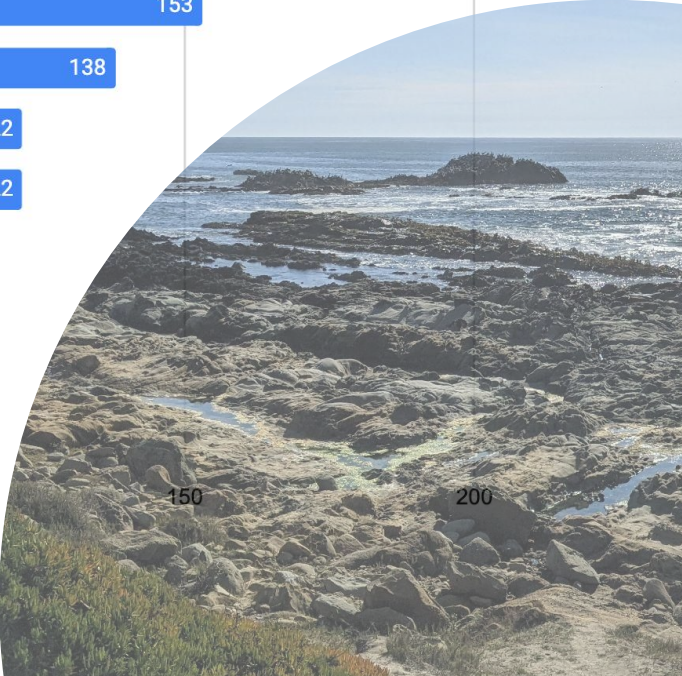
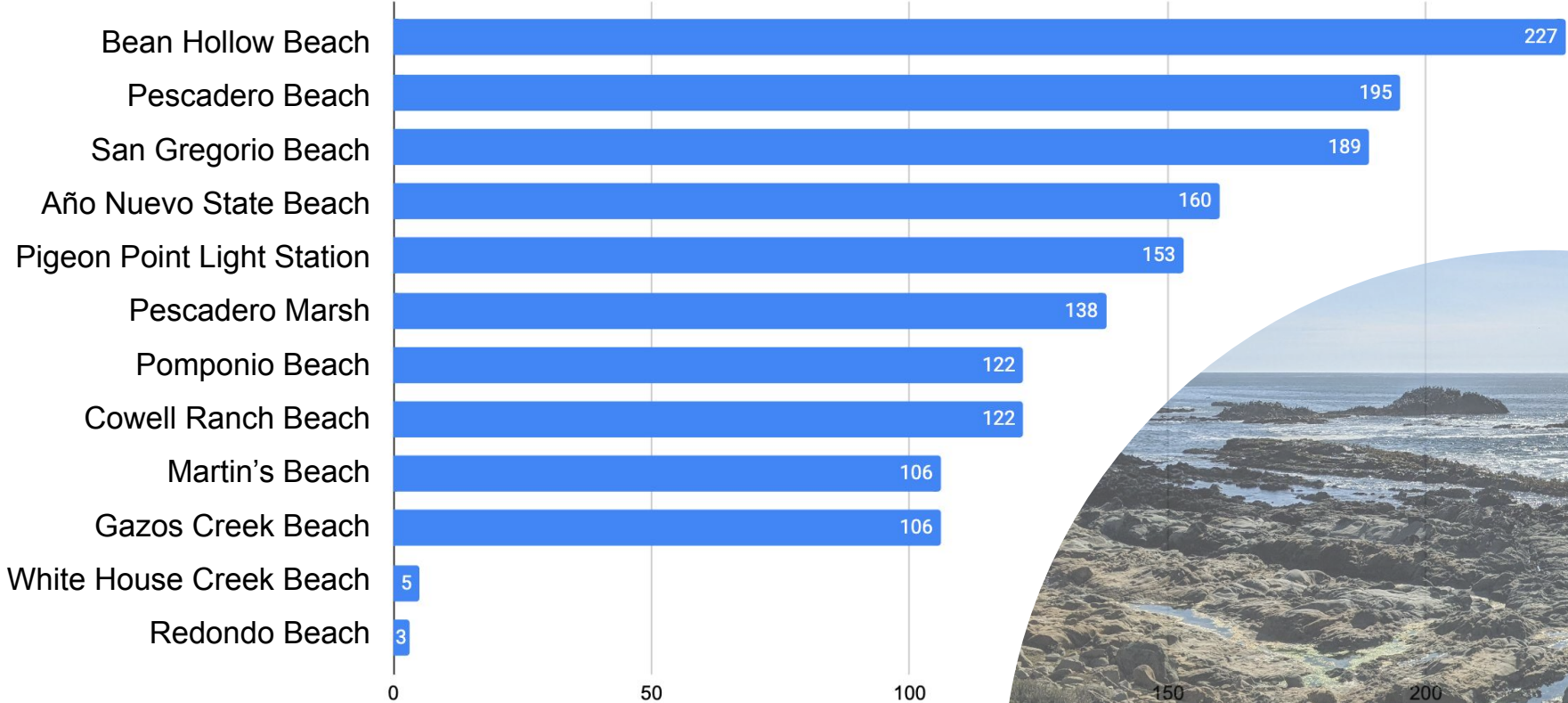
1. Half Moon Bay to San Gregorio (94019) - 91
2. Pescadero (94060) - 67
3. La Honda (94020) - 32



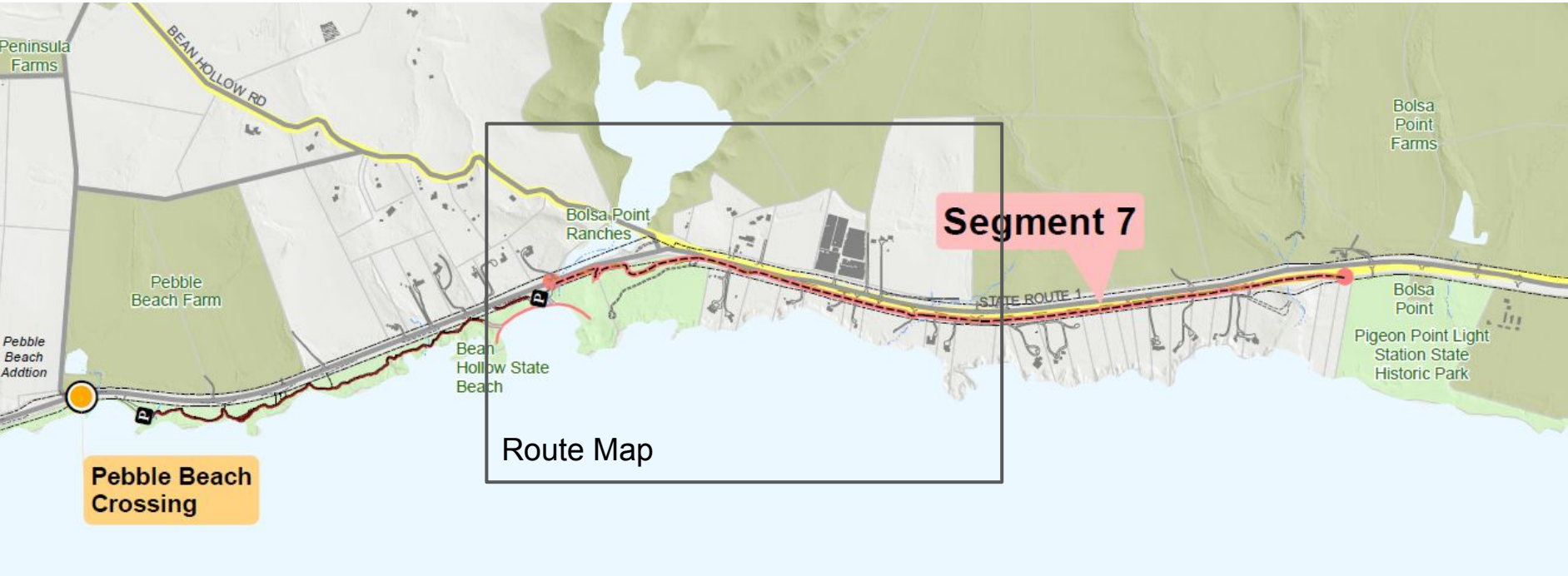
TRAIL SURFACE PREFERENCE

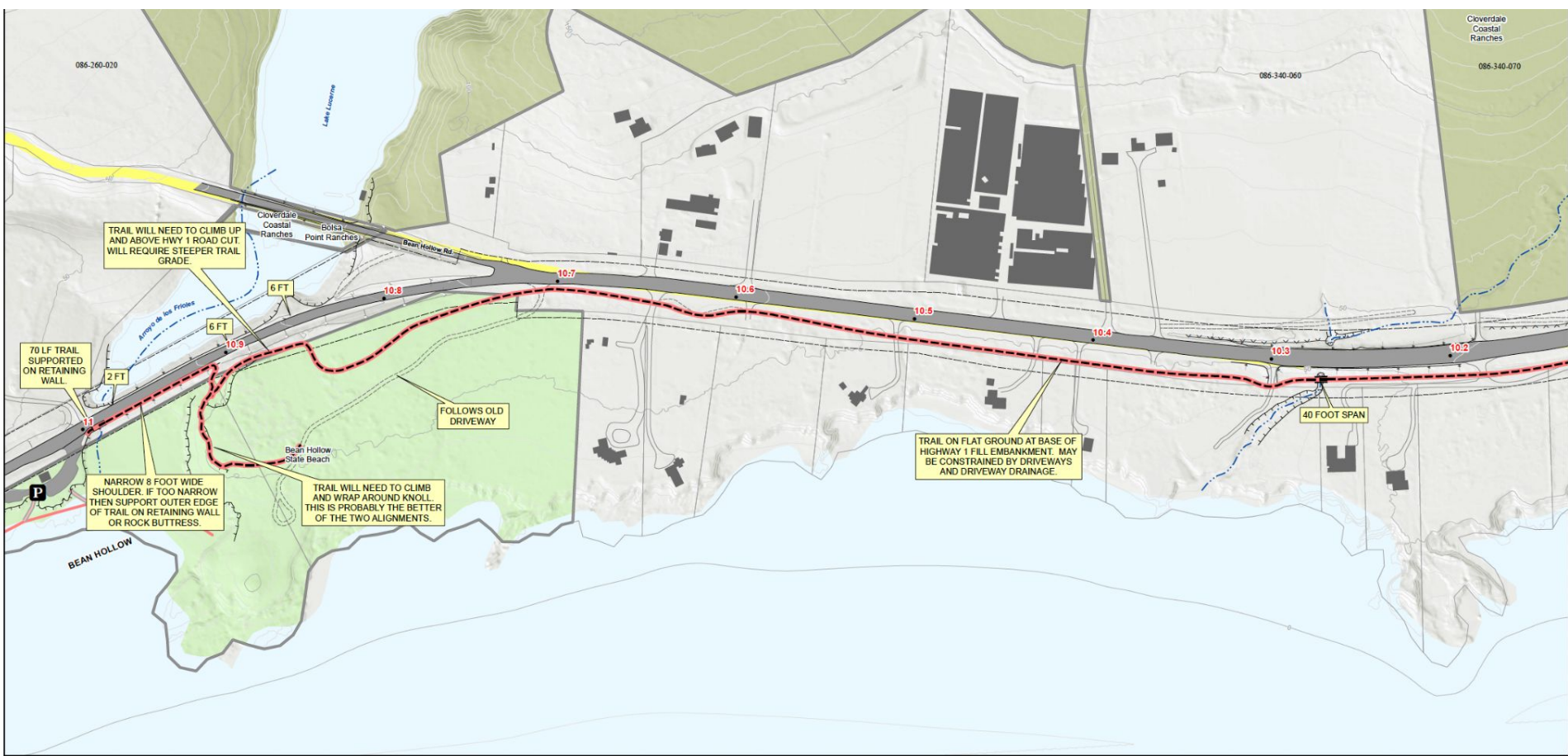


FAVORITE BEACH



Bean Hollow State Beach Segment Map





PROPOSED ROUTE

- PROPOSED TRAIL
- PROPOSED TRAIL BRIDGE
- PROPOSED CANTILEVER BRIDGE
- PROPOSED TRAIL WITH RETAINING WALL
- PROPOSED TRAIL CROSSING
- PROPOSED ALTERNATIVE ROUTE

EXISTING FEATURES

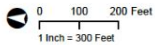
- CALIFORNIA COSTAL TRAIL
- BEACH OR SHORELINE ACCESS
- BEACH OR SHORELINE ROUTE
- SOCIAL TRAILS
- SECONDARY/CONNECTOR

- EDGE OF ROAD
- EDGE OF DRIVEWAY
- EDGE OF DIRT ROAD
- EDGE OF OLD DIRT ROAD
- EDGE OF TRAIL
- FILL EMBANKMENT

- CUT
- DITCH
- DITCH DIRT
- ESCARPMENT (GULLY, SLIDE, CHANNEL, ETC)
- STREAM

- COUNTY BOUNDARY
- PARKING LOT
- CALTRANS
- CALTRANS POST MILES
- BUILDINGS
- PARCELS

- OHLONE PORTOLA HERITAGE TRAIL
- PROTECTED - NO PUBLIC ACCESS
- PROTECTED - OPEN ACCESS
- PROTECTED - RESTRICTED ACCESS



Project Schedule

2022

Jan-Feb Review Mid-project Results
with Partners & Focus Group

2023

Mar-Apr Draft Study

Apr-May Community Presentations

Summer Final Study



Questions?

**Liz Westbrook, Zander Design: liz@sofiazander.com
Rachael Faye, POST: rfaye@openspacetrust.org**

Photo from Peninsula Open Space Trust